

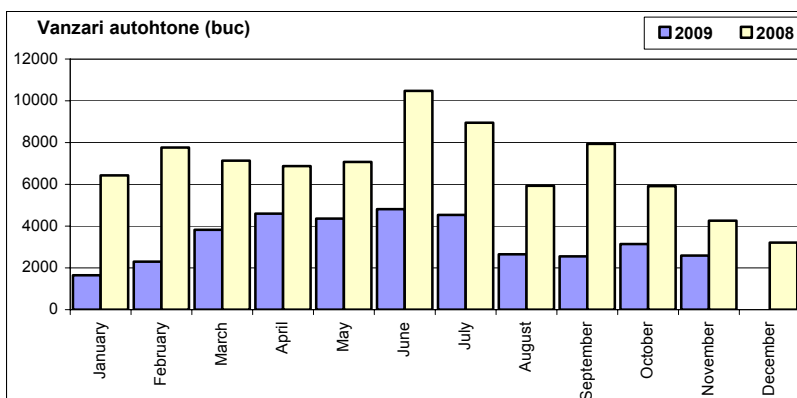
Top vânzări marci automobile - November 2009

	Autoturisme				Vehicule comerciale (inclusiv minibusuri și autobuze)				Total			
	unitati		cota piata		< 3.5 t		> 3.5 t		unitati		cota piata	
	Nov-09	Cumul-09	Nov-09	Cumul-09	Nov-09	Cumul-09	Nov-09	Cumul-09	Nov-09	Cumul-09	Nov-09	Cumul-09
DACIA	2 592	37 016	26.5%	30.4%	388	2 838	0	0	2 980	39 854	25.9%	28.9%
FORD	958	7 870	9.8%	6.5%	108	1 538	0	0	1 066	9 408	9.3%	6.8%
SKODA	839	8 221	8.6%	6.7%	4	48	0	0	843	8 269	7.3%	6.0%
VOLKSWAGEN	752	8 680	7.7%	7.1%	57	1 231	2	143	811	10 054	7.1%	7.3%
PEUGEOT	380	3 623	3.9%	3.0%	413	1 778	0	0	793	5 401	6.9%	3.9%
HYUNDAI	693	10 104	7.1%	8.3%	9	183	0	0	702	10 287	6.1%	7.4%
RENAULT	618	8 381	6.3%	6.9%	56	873	19	186	693	9 440	6.0%	6.8%
KIA	542	5 898	5.5%	4.8%	2	11	0	0	544	5 909	4.7%	4.3%
FIAT	314	4 663	3.2%	3.8%	217	1 674	0	0	531	6 337	4.6%	4.6%
OPEL	383	5 445	3.9%	4.5%	11	172	0	0	394	5 617	3.4%	4.1%
TOYOTA	283	3 153	2.9%	2.6%	45	410	0	0	328	3 563	2.9%	2.6%
CHEVROLET	306	3 497	3.1%	2.9%	0	0	0	0	306	3 497	2.7%	2.5%
CITROEN	180	1 900	1.8%	1.6%	20	339	0	0	200	2 239	1.7%	1.6%
IVECO	0	0	0.0%	0.0%	64	621	97	618	161	1 239	1.4%	0.9%
MERCEDES	66	1 172	0.7%	1.0%	75	1 345	8	603	149	3 120	1.3%	2.3%
SUZUKI	136	2 275	1.4%	1.9%	0	0	0	0	136	2 275	1.2%	1.6%
NISSAN	99	1 141	1.0%	0.9%	33	157	0	0	132	1 298	1.1%	0.9%
HONDA	109	895	1.1%	0.7%	0	0	0	0	109	895	0.9%	0.6%
SEAT	98	1 590	1.0%	1.3%	0	0	0	0	98	1 590	0.9%	1.2%
BMW	94	1 023	1.0%	0.8%	0	0	0	0	94	1 023	0.8%	0.7%
Rest	339	5 384	3.5%	4.4%	12	219	77	1 186	428	6 789	3.7%	4.9%
TOTAL	9 781	121 931	100.0%	100.0%	1 514	13 437	203	2 736	11 498	138 104	100.0%	100.0%

Vanzari autoturisme autohtone

Luna/An	2009	2008	Variatie
January	1 645	6 429	-74.4%
February	2 302	7 761	-70.3%
March	3 823	7 135	-46.4%
April	4 595	6 872	-33.1%
May	4 361	7 073	-38.3%
June	4 816	10 472	-54.0%
July	4 538	8 951	-49.3%
August	2 653	5 930	-55.3%
September	2 550	7 941	-67.9%
October	3 141	5 912	-46.9%
November	2 592	4 258	-39.1%
December	-	3 211	-
Total	37 016	78 734	-53.0%

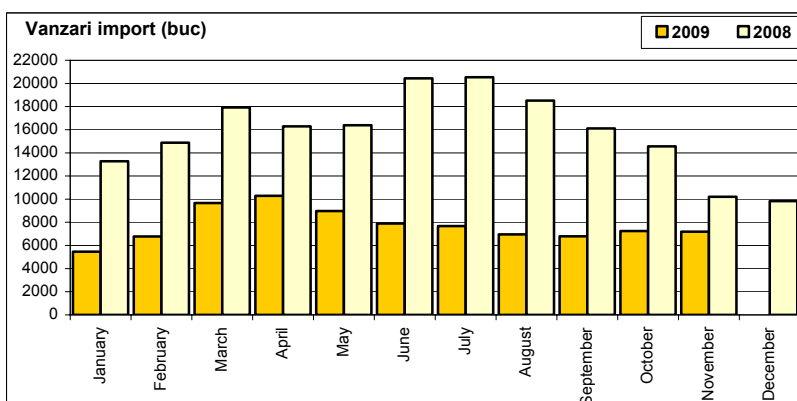
81 945



Vanzari autoturisme import

Luna/An	2009	2008	Variatie
January	5 463	13 279	-58.9%
February	6 780	14 882	-54.4%
March	9 661	17 915	-46.1%
April	10 289	16 292	-36.8%
May	8 975	16 382	-45.2%
June	7 900	20 443	-61.4%
July	7 673	20 528	-62.6%
August	6 954	18 517	-62.4%
September	6 792	16 116	-57.9%
October	7 239	14 562	-50.3%
November	7 189	10 202	-29.5%
December	-	9 836	-
Total	84 915	179 118	-52.6%

188 954



Top vanzari autoturisme import - marci

MARCA	November		Variație Oct		2009		Variație 2008	
	poziție	unitati	poziție	procent	poziție	unitati	poziție	procent
HYUNDAI	4	693	4	↘ -0.3%	1	10104	6	↘ -14.7%
VOLKSWAGEN	3	752	3	↗ 3.7%	2	8680	2	↘ -54.9%
RENAULT	5	618	6	↗ 6.7%	3	8381	3	↘ -54.7%
SKODA	2	839	2	↗ 8.5%	4	8221	1	↘ -63.2%
FORD	1	958	1	↗ 21.1%	5	7870	4	↘ -52.7%
KIA	6	542	5	↘ -14.8%	6	5898	11	↘ -28.9%
OPEL	7	383	9	↗ 9.7%	7	5445	5	↘ -66.0%
FIAT	9	314	7	↘ -18.7%	8	4663	8	↘ -50.6%
PEUGEOT	8	380	10	↗ 13.1%	9	3623	7	↘ -61.9%
CHEVROLET	10	306	11	↘ -8.9%	10	3497	9	↘ -61.7%
Rest		1404		-14.0%		18533		-51.4%
TOTAL		7189		-0.7%		84915		-52.6%

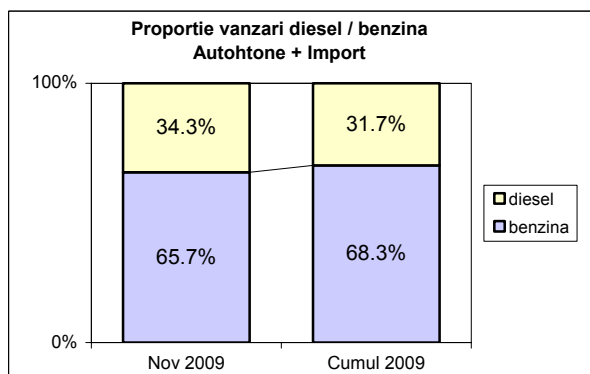
Top vanzari autoturisme import - modele

MODEL	November		Variație Oct		2009		Variație 2008	
	poziție	unitati	poziție	procent	poziție	unitati	poziție	procent
KIA CEE'D	1	497	1	↘ -21.6%	1	5459	4	↘ -26.2%
RENAULT CLIO	5	310	2	↘ -9.4%	2	4938	1	↘ -54.7%
FORD FOCUS	3	367	4	↗ 16.5%	3	3406	3	↘ -55.3%
HYUNDAI i 30	2	425	13	↗ 226.9%	4	3262	22	↗ 36.9%
SKODA OCTAVIA	4	361	3	↗ 6.8%	5	3222	2	↘ -64.1%
SKODA OCTAVIA TOUR	6	291	7	↗ 13.7%	6	2741	7	↘ -55.4%
VOLKSWAGEN GOLF	8	260	6	↘ -5.5%	7	2717	11	↘ -40.4%
RENAULT MEGANE	11	158	8	↘ -13.7%	8	2202	8	↘ -63.0%
OPEL ASTRA CLASSIC	21	100	24	↗ 8.7%	9	2102	5	↘ -66.3%
HYUNDAI i 10	25	86	5	↘ -71.1%	10	1964	21	-
Rest		4334		-1.0%		52902		-54.6%
TOTAL		7189		-0.7%		84915		-52.6%

Vanzari autoturisme DIESEL

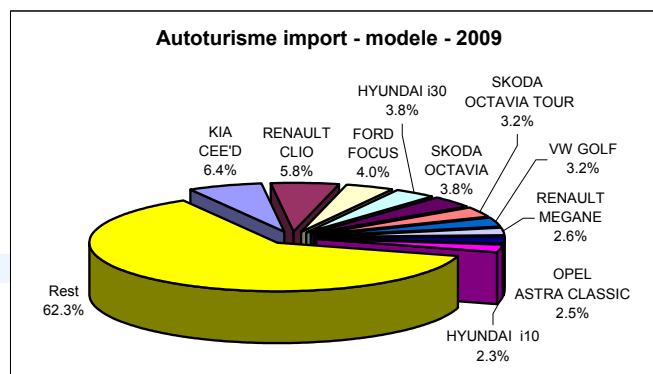
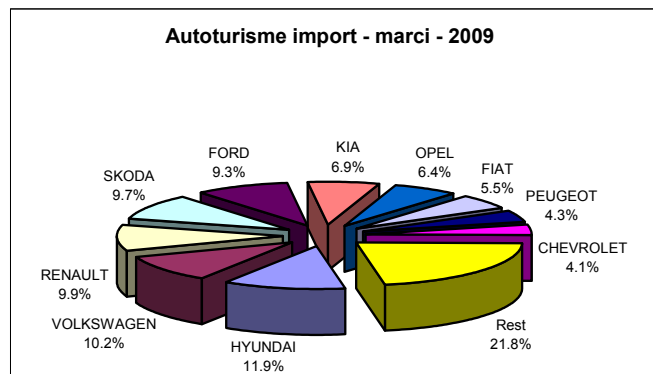
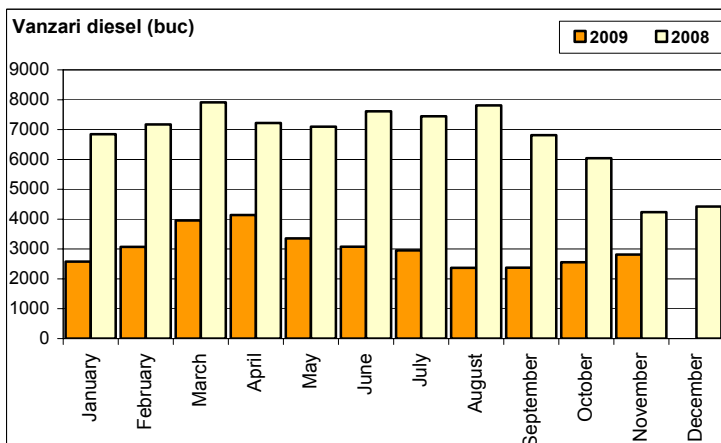
Autohtone + Import

	benzina		diesel		total
Nov 2009	6 423	65.7%	3358	34.3%	9 781
Cumul 2009	83 286	68.3%	38645	31.7%	121 931



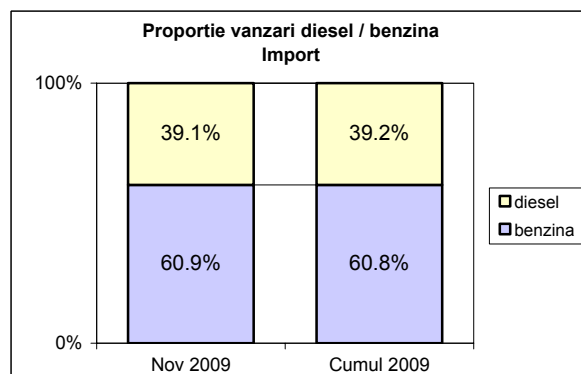
Vanzari autoturisme DIESEL - import

Luna/An	2009	pondere diesel	2008	pondere diesel	Variație 09/08
January	2 581	47.2%	6 846	51.5%	-62.3%
February	3 072	45.3%	7 173	58.7%	-57.2%
March	3 958	41.0%	7 910	46.1%	-50.0%
April	4 139	40.2%	7 223	50.0%	-42.7%
May	3 356	37.4%	7 099	38.8%	-52.7%
June	3 076	38.9%	7 612	41.9%	-59.6%
July	2 956	38.5%	7 445	38.0%	-60.3%
August	2 368	34.1%	7 811	38.2%	-69.7%
September	2 374	35.0%	6 814	39.9%	-65.2%
October	2 555	35.3%	6 039	30.9%	-57.7%
November	2 813	39.1%	4 232	22.0%	-33.5%
December	-	-	4 422	22.6%	-
Total	33 248	39.2%	76 204	40.2%	-56.4%



Import

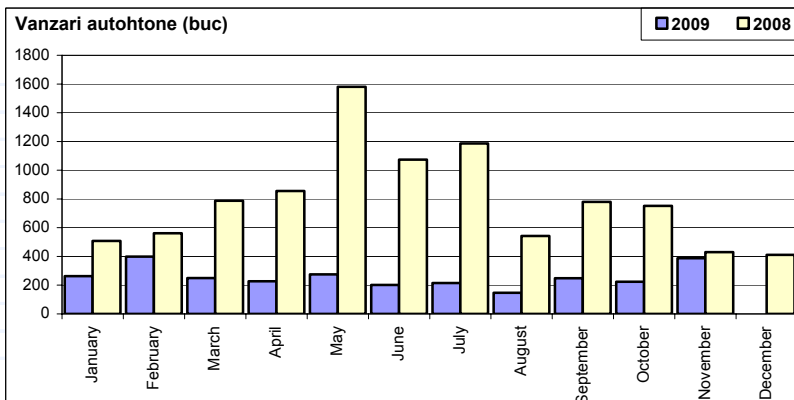
	benzina		diesel		total
Nov 2009	4 376	60.9%	2813	39.1%	7 189
Cumul 2009	51 667	60.8%	33248	39.2%	84 915



Vanzari comerciale usoare + minibus autohtone

Luna/An	2009	2008	Variatie
January	263	508	-48.2%
February	399	561	-28.9%
March	250	787	-68.2%
April	227	856	-73.5%
May	275	1 581	-82.6%
June	202	1 074	-81.2%
July	215	1 186	-81.9%
August	147	542	-72.9%
September	248	780	-68.2%
October	224	752	-70.2%
November	388	430	-9.8%
December	-	411	-
Total	2 838	9 057	-68.7%

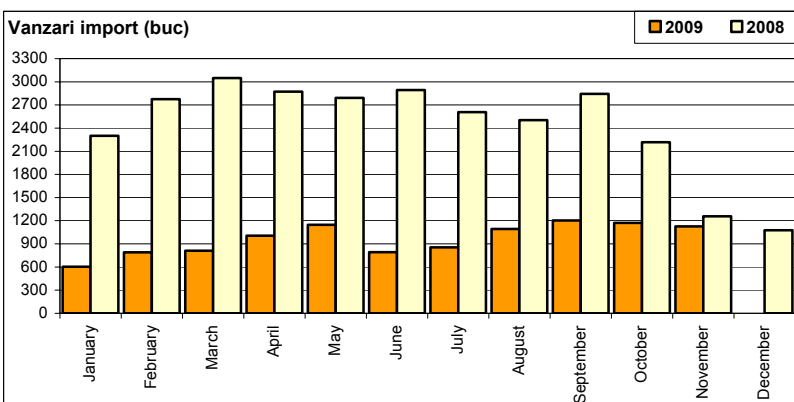
9 468



Vanzari comerciale usoare + minibus import

Luna/An	2009	2008	Variatie
January	604	2 301	-73.8%
February	790	2 776	-71.5%
March	811	3 048	-73.4%
April	1 005	2 873	-65.0%
May	1 147	2 791	-58.9%
June	792	2 893	-72.6%
July	855	2 608	-67.2%
August	1 093	2 504	-56.3%
September	1 204	2 844	-57.7%
October	1 172	2 217	-47.1%
November	1 126	1 257	-10.4%
December	-	1 077	-
Total	10 599	28 112	-62.3%

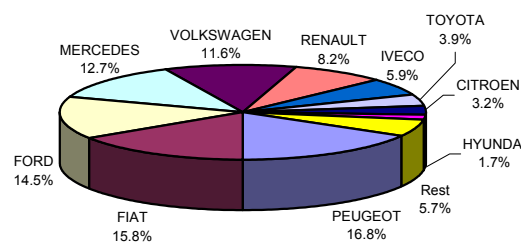
29 189



Vanzari comerciale <3.5t si minibus import - marci

MARCA	November		Variatie Oct		2009		Variatie 2008	
	pozitie	unitati	pozitie	procent	pozitie	unitati	pozitie	procent
PEUGEOT	1	413	1	↘ -7.6%	1	1778	4	↘ -34.5%
FIAT	2	217	2	↗ 44.7%	2	1674	1	↘ -70.5%
FORD	3	108	3	↘ -22.3%	3	1538	2	↘ -68.3%
MERCEDES	4	75	5	↘ -21.1%	4	1345	7	↘ -42.9%
VOLKSWAGEN	6	57	7	↗ 32.6%	5	1231	3	↘ -55.6%
RENAULT	7	56	4	↘ -47.7%	6	873	5	↘ -66.8%
IVECO	5	64	6	↘ -25.6%	7	621	6	↘ -75.6%
TOYOTA	8	45	8	↗ 25.0%	8	410	9	↘ -57.8%
CITROEN	10	20	9	→ -	9	339	8	↘ -73.6%
HYUNDAI	12	9	13	↗ 12.5%	10	183	15	↗ 108.0%
Rest		62		51.2%		607		-72.9%
TOTAL		1126		-3.9%		10599		-62.3%

Vanzari com <3.5t si minibus import - marci - 2009



Vanzari comerciale <3.5t si minibus import - modele

MODEL	November		Variatie Oct		2009		Variatie 2008	
	pozitie	unitati	pozitie	procent	pozitie	unitati	pozitie	procent
PEUGEOT BOXER	1	301	1	↘ -14.2%	1	1339	4	↘ -31.5%
FORD TRANSIT	3	90	3	↗ 9.8%	2	1089	1	↘ -74.1%
MERCEDES SPRINTER	4	61	2	↘ -26.5%	3	1009	7	↘ -31.8%
FIAT DUCATO	2	182	4	↗ 136.4%	4	808	2	↘ -68.5%
VOLKSWAGEN CADDY	29	4	20	↘ -55.6%	5	586	15	↘ -3.8%
IVECO DAILY	5	58	5	↘ -18.3%	6	585	3	↘ -75.8%
FIAT DOBLO CARGO	12	19	7	↘ -64.2%	7	517	5	↘ -72.3%
TOYOTA HI-LUX	8	40	10	↗ 17.6%	8	395	9	↘ -58.0%
RENAULT MASTER	11	20	11	↘ -23.1%	9	380	6	↘ -74.6%
FORD TRANSIT CONNECT	13	17	8	↘ -62.2%	10	304	16	↘ -42.4%
Rest		334		-2.1%		3587		-64.3%
TOTAL		1126		-3.9%		10599		-62.3%

Vanzari com <3.5t si minibus import - modele - 2009

