

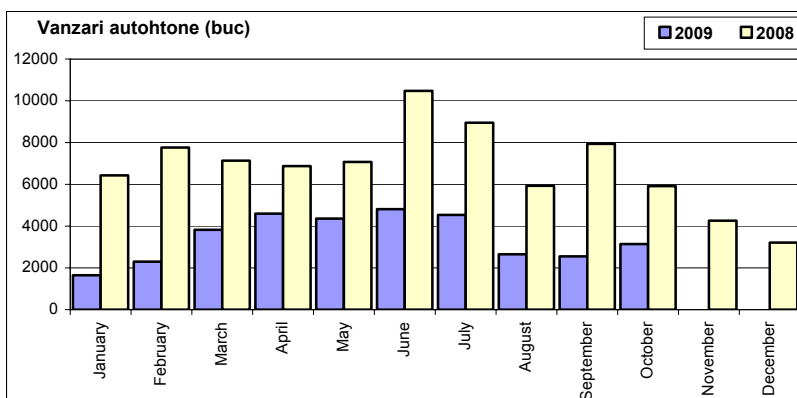
Top vânzări marci automobile - October 2009

	Autoturisme				Vehicule comerciale (inclusiv minibusuri și autobuze)				Total			
	unitati		cota piata		< 3.5 t		> 3.5 t		unitati		cota piata	
	Oct-09	Cumul-09	Oct-09	Cumul-09	Oct-09	Cumul-09	Oct-09	Cumul-09	Oct-09	Cumul-09	Oct-09	Cumul-09
DACIA	3 141	34 424	30.3%	30.7%	224	2 450	0	0	3 365	36 874	28.0%	29.1%
FORD	791	6 912	7.6%	6.2%	139	1 430	0	0	930	8 342	7.7%	6.6%
PEUGEOT	336	3 243	3.2%	2.9%	447	1 365	0	0	783	4 608	6.5%	3.6%
SKODA	773	7 382	7.4%	6.6%	9	44	0	0	782	7 426	6.5%	5.9%
VOLKSWAGEN	725	7 928	7.0%	7.1%	43	1 174	2	141	770	9 243	6.4%	7.3%
HYUNDAI	695	9 411	6.7%	8.4%	8	174	0	0	703	9 585	5.8%	7.6%
RENAULT	579	7 763	5.6%	6.9%	107	817	15	167	701	8 747	5.8%	6.9%
KIA	636	5 356	6.1%	4.8%	0	9	0	0	636	5 365	5.3%	4.2%
FIAT	386	4 349	3.7%	3.9%	150	1 457	0	0	536	5 806	4.5%	4.6%
TOYOTA	355	2 870	3.4%	2.6%	36	365	0	0	391	3 235	3.2%	2.6%
OPEL	349	5 062	3.4%	4.5%	11	161	0	0	360	5 223	3.0%	4.1%
CHEVROLET	336	3 191	3.2%	2.8%	0	0	0	0	336	3 191	2.8%	2.5%
MERCEDES	78	1 106	0.8%	1.0%	95	1 270	55	595	228	2 971	1.9%	2.3%
SUZUKI	209	2 139	2.0%	1.9%	0	0	0	0	209	2 139	1.7%	1.7%
CITROEN	175	1 720	1.7%	1.5%	20	319	0	0	195	2 039	1.6%	1.6%
IVECO	0	0	0.0%	0.0%	86	557	45	521	131	1 078	1.1%	0.9%
NISSAN	127	1 042	1.2%	0.9%	1	124	0	0	128	1 166	1.1%	0.9%
MITSUBISHI	74	1 230	0.7%	1.1%	16	177	4	46	94	1 453	0.8%	1.1%
BMW	91	929	0.9%	0.8%	0	0	0	0	91	929	0.8%	0.7%
AUDI	90	1 098	0.9%	1.0%	0	0	0	0	90	1 098	0.7%	0.9%
Rest	434	4 995	4.2%	4.5%	4	30	136	1 063	574	6 088	4.8%	4.8%
TOTAL	10 380	112 150	100.0%	100.0%	1 396	11 923	257	2 533	12 033	126 606	100.0%	100.0%

Vanzari autoturisme autohtone

Luna/An	2009	2008	Variatie
January	1 645	6 429	-74.4%
February	2 302	7 761	-70.3%
March	3 823	7 135	-46.4%
April	4 595	6 872	-33.1%
May	4 361	7 073	-38.3%
June	4 816	10 472	-54.0%
July	4 538	8 951	-49.3%
August	2 653	5 930	-55.3%
September	2 550	7 941	-67.9%
October	3 141	5 912	-46.9%
November	-	4 258	-
December	-	3 211	-
Total	34 424	74 476	-53.8%

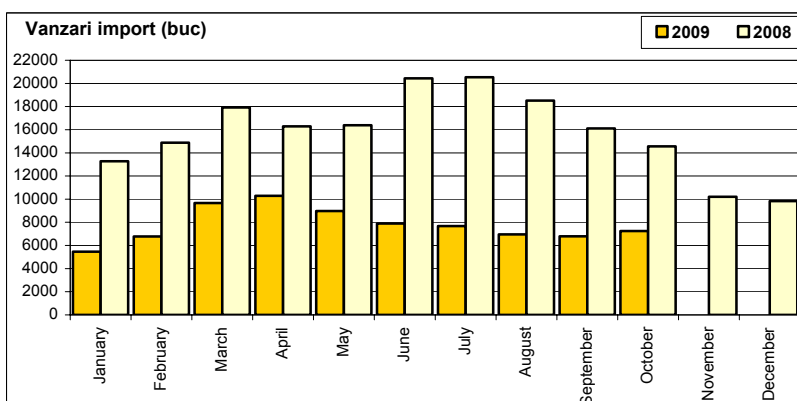
81 945



Vanzari autoturisme import

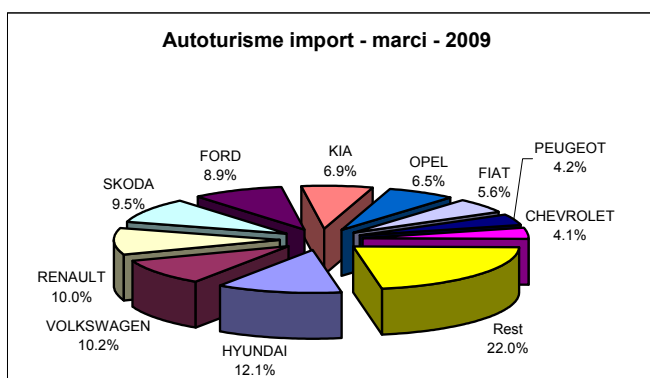
Luna/An	2009	2008	Variatie
January	5 463	13 279	-58.9%
February	6 780	14 882	-54.4%
March	9 661	17 915	-46.1%
April	10 289	16 292	-36.8%
May	8 975	16 382	-45.2%
June	7 900	20 443	-61.4%
July	7 673	20 528	-62.6%
August	6 954	18 517	-62.4%
September	6 792	16 116	-57.9%
October	7 239	14 562	-50.3%
November	-	10 202	-
December	-	9 836	-
Total	77 726	168 916	-54.0%

188 954



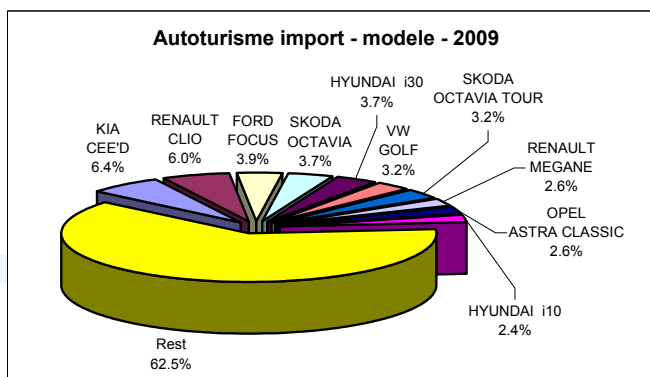
Top vanzari autoturisme import - marci

MARCA	October		Variație Sep		2009	Variație 2008		
	poziție	unitati	poziție	procent		poziție	unitati	poziție
HYUNDAI	4	695	3	↗ 1.6%	1	9411	6	↘ -12.3%
VOLKSWAGEN	3	725	2	↗ 2.4%	2	7928	2	↘ -55.8%
RENAULT	6	579	5	↘ -6.3%	3	7763	3	↘ -55.7%
SKODA	2	773	1	↗ 9.2%	4	7382	1	↘ -65.5%
FORD	1	791	4	↗ 23.6%	5	6912	4	↘ -56.7%
KIA	5	636	6	↗ 4.1%	6	5356	11	↘ -31.0%
OPEL	9	349	7	↘ -14.5%	7	5062	5	↘ -66.7%
FIAT	7	386	8	↗ 9.0%	8	4349	8	↘ -50.7%
PEUGEOT	10	336	13	↗ 127.0%	9	3243	7	↘ -64.8%
CHEVROLET	11	336	10	↗ 3.4%	10	3191	9	↘ -63.1%
Rest		1633		2.8%		17129		↘ -52.0%
TOTAL		7239		6.6%		77726		-54.0%



Top vanzari autoturisme import - modele

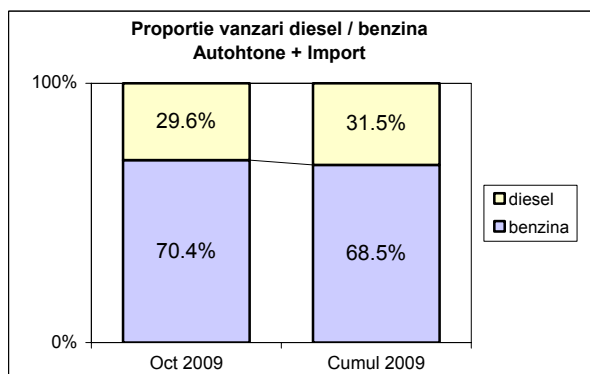
MODEL	October		Variație Sep		2009	Variație 2008		
	poziție	unitati	poziție	procent		poziție	unitati	poziție
KIA CEE'D	1	634	1	↗ 3.9%	1	4962	4	↘ -28.2%
RENAULT CLIO	2	342	2	↘ -7.6%	2	4628	1	↘ -55.1%
FORD FOCUS	4	315	7	↗ 37.0%	3	3039	3	↘ -58.1%
SKODA OCTAVIA	3	338	4	↗ 17.4%	4	2861	2	↘ -66.8%
HYUNDAI i30	13	130	3	↘ -57.4%	5	2837	22	↗ 27.3%
VOLKSWAGEN GOLF	6	275	5	↗ 4.2%	6	2457	12	↘ -40.7%
SKODA OCTAVIA TOUR	7	256	6	↗ 4.1%	7	2450	7	↘ -58.4%
RENAULT MEGANE	8	183	10	↗ 0.5%	8	2044	8	↘ -63.9%
OPEL ASTRA CLASSIC	24	92	21	↗ 1.1%	9	2002	6	↘ -66.2%
HYUNDAI i10	5	298	17	↗ 154.7%	10	1878	21	↘ -17.9%
Rest		4376		7.0%		48568		↘ -55.7%
TOTAL		7239		6.6%		77726		-54.0%



Vanzari autoturisme DIESEL

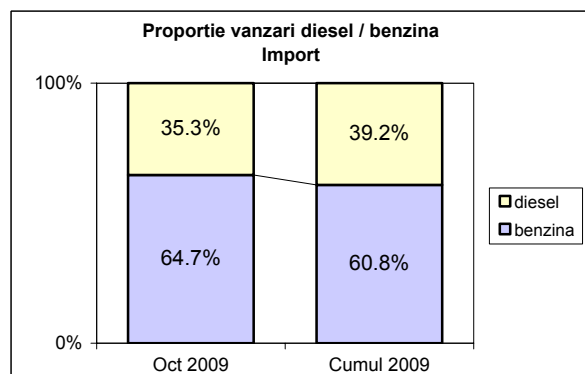
Autohtone + Import

	benzina		diesel		total
Oct 2009	7 303	70.4%	3077	29.6%	10 380
Cumul 2009	76 863	68.5%	35287	31.5%	112 150



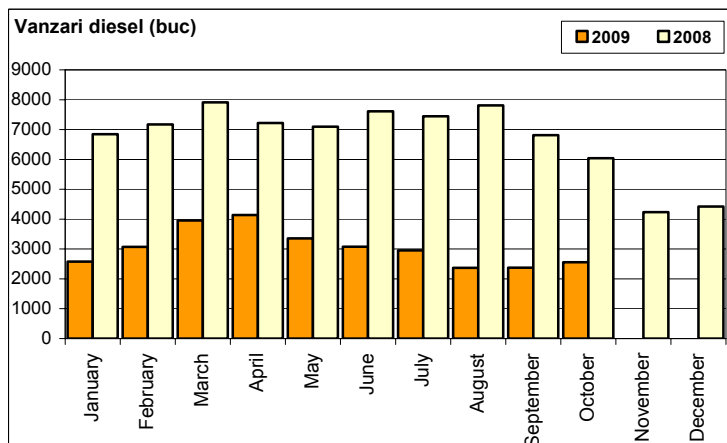
Import

	benzina		diesel		total
Oct 2009	4 684	64.7%	2555	35.3%	7 239
Cumul 2009	47 291	60.8%	30435	39.2%	77 726



Vanzari autoturisme DIESEL - import

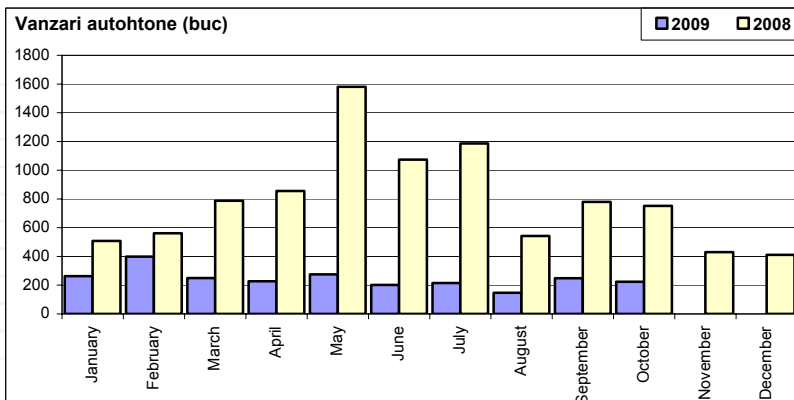
Luna/An	2009	pondere diesel	2008	pondere diesel	Variație 09/08
January	2 581	47.2%	6 846	51.5%	-62.3%
February	3 072	45.3%	7 173	58.7%	-57.2%
March	3 958	41.0%	7 910	46.1%	-50.0%
April	4 139	40.2%	7 223	50.0%	-42.7%
May	3 356	37.4%	7 099	38.8%	-52.7%
June	3 076	38.9%	7 612	41.9%	-59.6%
July	2 956	38.5%	7 445	38.0%	-60.3%
August	2 368	34.1%	7 811	38.2%	-69.7%
September	2 374	35.0%	6 814	39.9%	-65.2%
October	2 555	35.3%	6 039	30.9%	-57.7%
November	-	-	4 232	22.0%	-
December	-	-	4 422	22.6%	-
Total	30 435	39.2%	71 972	42.3%	-57.7%



Vanzari comerciale usoare + minibus autohtone

Luna/An	2009	2008	Variatie
January	263	508	-48.2%
February	399	561	-28.9%
March	250	787	-68.2%
April	227	856	-73.5%
May	275	1 581	-82.6%
June	202	1 074	-81.2%
July	215	1 186	-81.9%
August	147	542	-72.9%
September	248	780	-68.2%
October	224	752	-70.2%
November	-	430	-
December	-	411	-
Total	2 450	8 627	-71.6%

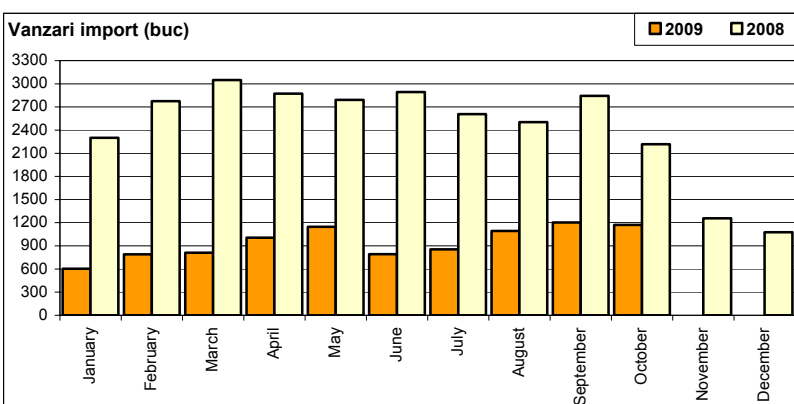
9 468



Vanzari comerciale usoare + minibus import

Luna/An	2009	2008	Variatie
January	604	2 301	-73.8%
February	790	2 776	-71.5%
March	811	3 048	-73.4%
April	1 005	2 873	-65.0%
May	1 147	2 791	-58.9%
June	792	2 893	-72.6%
July	855	2 608	-67.2%
August	1 093	2 504	-56.3%
September	1 204	2 844	-57.7%
October	1 172	2 217	-47.1%
November	-	1 257	-
December	-	1 077	-
Total	9 473	26 855	-64.7%

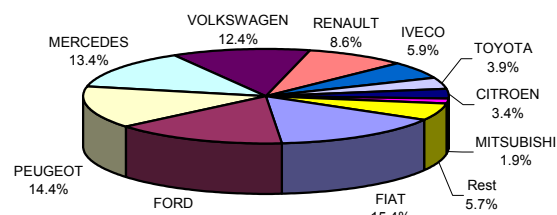
29 189



Vanzari comerciale <3.5t si minibus import - marci

MARCA	October		Variatie Sep		2009		Variatie 2008	
	pozitie	unitati	pozitie	procent	pozitie	unitati	pozitie	procent
FIAT	2	150	6	↗ 36.4%	1	1457	1	↘ -73.5%
FORD	3	139	1	↘ -33.8%	2	1430	2	↘ -69.6%
PEUGEOT	1	447	2	↗ 136.5%	3	1365	4	↘ -47.4%
MERCEDES	5	95	3	↘ -34.9%	4	1270	7	↘ -44.0%
VOLKSWAGEN	7	43	4	↘ -66.4%	5	1174	3	↘ -55.6%
RENAULT	4	107	7	↗ 10.3%	6	817	5	↘ -67.5%
IVECO	6	86	8	→ -	7	557	6	↘ -77.1%
TOYOTA	8	36	9	↘ -5.3%	8	365	9	↘ -59.1%
CITROEN	9	20	10	↘ -33.3%	9	319	8	↘ -72.7%
MITSUBISHI	10	16	11	→ -	10	177	10	↘ -70.8%
Rest		33		-78.5%		542		-64.4%
TOTAL		1172		-2.7%		9473		-64.7%

Vanzari com <3.5t si minibus import - marci - 2009



Vanzari comerciale <3.5t si minibus import - modele

MODEL	October		Variatie Sep		2009		Variatie 2008	
	pozitie	unitati	pozitie	procent	pozitie	unitati	pozitie	procent
PEUGEOT BOXER	1	351	1	↗ 110.2%	1	1038	4	↘ -44.6%
FORD TRANSIT	3	82	2	↘ -44.6%	2	999	1	↘ -75.6%
MERCEDES SPRINTER	2	83	3	↘ -33.6%	3	948	7	↘ -33.3%
FIAT DUCATO	4	77	7	↗ 67.4%	4	626	2	↘ -74.9%
VOLKSWAGEN CADDY	22	9	12	↘ -66.7%	5	582	15	↘ -0.2%
IVECO DAILY	5	71	5	↘ -12.3%	6	527	3	↘ -77.1%
FIAT DOBLO CARGO	7	53	9	↗ 32.5%	7	498	5	↘ -72.4%
RENAULT MASTER	11	26	8	↘ -40.9%	8	360	6	↘ -75.1%
TOYOTA HI-LUX	10	34	10	↘ -8.1%	9	355	9	↘ -58.9%
FORD TRANSIT CONNECT	8	45	11	↗ 25.0%	10	287	16	↘ -43.6%
Rest		341		-24.7%		3253		-65.6%
TOTAL		1172		-2.7%		9473		-64.7%

Vanzari com <3.5t si minibus import - modele - 2009

